

Music Alphabet \_\_\_\_\_

Five lines four spaces \_\_\_\_\_

Treble Clef line names \_\_\_\_\_

Bass Clef line names \_\_\_\_\_

Treble Clef space names \_\_\_\_\_

Bass Clef space names \_\_\_\_\_

Double Bar \_\_\_\_\_

Measure \_\_\_\_\_

1. G-B-D-F-A

2. A-C-E-G

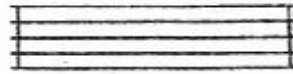
3.



4. Staff

5. F-A-C-E-

6.



7. A-B-C-D-E-F-G-

8. E-G-B-D-F

Match the following. Place the number on the line.

Two Eighth-notes \_\_\_\_\_

G Clef \_\_\_\_\_

Quarter-note \_\_\_\_\_

The Grand Staff \_\_\_\_\_

F Clef \_\_\_\_\_

Half-note \_\_\_\_\_

Time Signature \_\_\_\_\_

Whole rest \_\_\_\_\_

Middle C \_\_\_\_\_

Half-rest \_\_\_\_\_

Dotted Half-note \_\_\_\_\_

Quarter-rest \_\_\_\_\_

G in the Treble Clef \_\_\_\_\_

A in the Bass Clef \_\_\_\_\_

