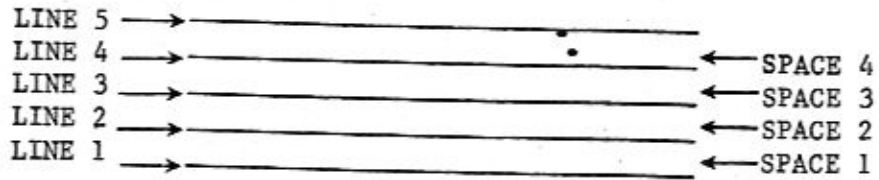


Theory:

THE GRAND STAFF

This is a staff. A staff has 5 lines and 4 spaces. The lines and spaces are numbered starting from the lowest space or line, counting up.



1. Number the lines on the staff below. 2. Number the spaces on the staff below.



Music is written on a staff with a clef sign to give each line and each space a letter-name.

The TREBLE CLEF SIGN originally was the letter G, identifying the "G" line. The Treble Clef Sign ends on the 2nd line of the upper staff and it crosses the G line 4 times. The 2nd line is the G line.

This is a TREBLE or G CLEF SIGN.



The BASS CLEF SIGN originally was the letter F, identifying the F line.

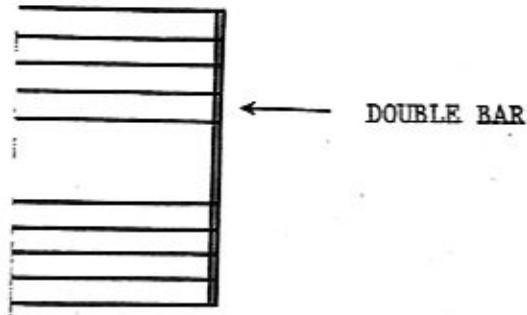
This is a BASS or F CLEF SIGN.



This is how to draw the Bass Clef Sign. Trace over the F Clefs on the staff below.

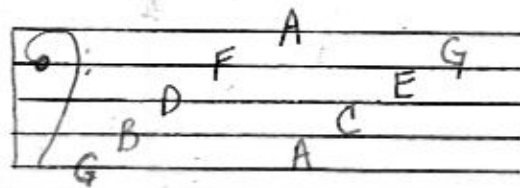
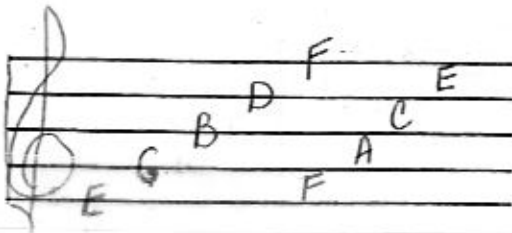
The Double Bar

The Double Bar is placed at the end of a composition, or at the end of a section.







There are 7 letters in the MUSIC ALPHABET. A B C D E F G

Treble Clef line names: E - G - B - D - F (Every-Good-Boy-Does-Fine)
 Treble Clef space names: F - A - C - E (FACE)



Bass Clef line names: G - B - D - F - A (Great-Big-Dogs-Fight-Animals)
 Bass Clef space names: A - C - E - G (All-Cows-Eat-Grass)

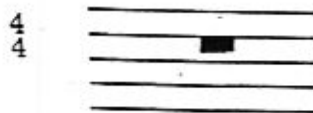
NOTE VALUES

A Quarter-note		1 count (beat)
A Half-note		2 counts
A Dotted Half-note		3 counts
A Whole note		4 counts

RESTS

Signs of Silence are called Rests and are just as important as the notes.

The WHOLE rest usually hangs from the fourth line of the staff. It gets 4 counts.



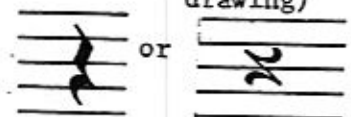
4 beats

The HALF-rest is usually placed on the third line of the staff. It gets 2 counts.



2 beats

The QUARTER-rest looks like this and gets 1 count. (For simplified drawing)



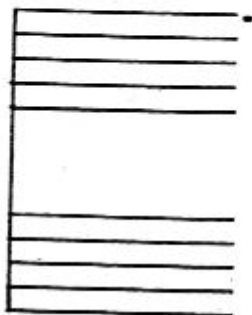
1 beat

1 beat

The Bar and the Brace

A BAR and a BRACE are used to enclose the Treble Clef and the Bass Clef at the beginning of a composition. The Bar and Brace form a unit to indicate the joining of the staves. Staves joined in this way are read (played) simultaneously.

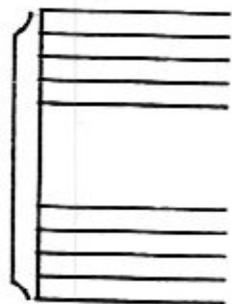
Bar



Brace



Brace



The staff is divided into measures with bar lines. The distance between two bar lines is one MEASURE. At the end of a composition is a DOUBLE BAR LINE.

